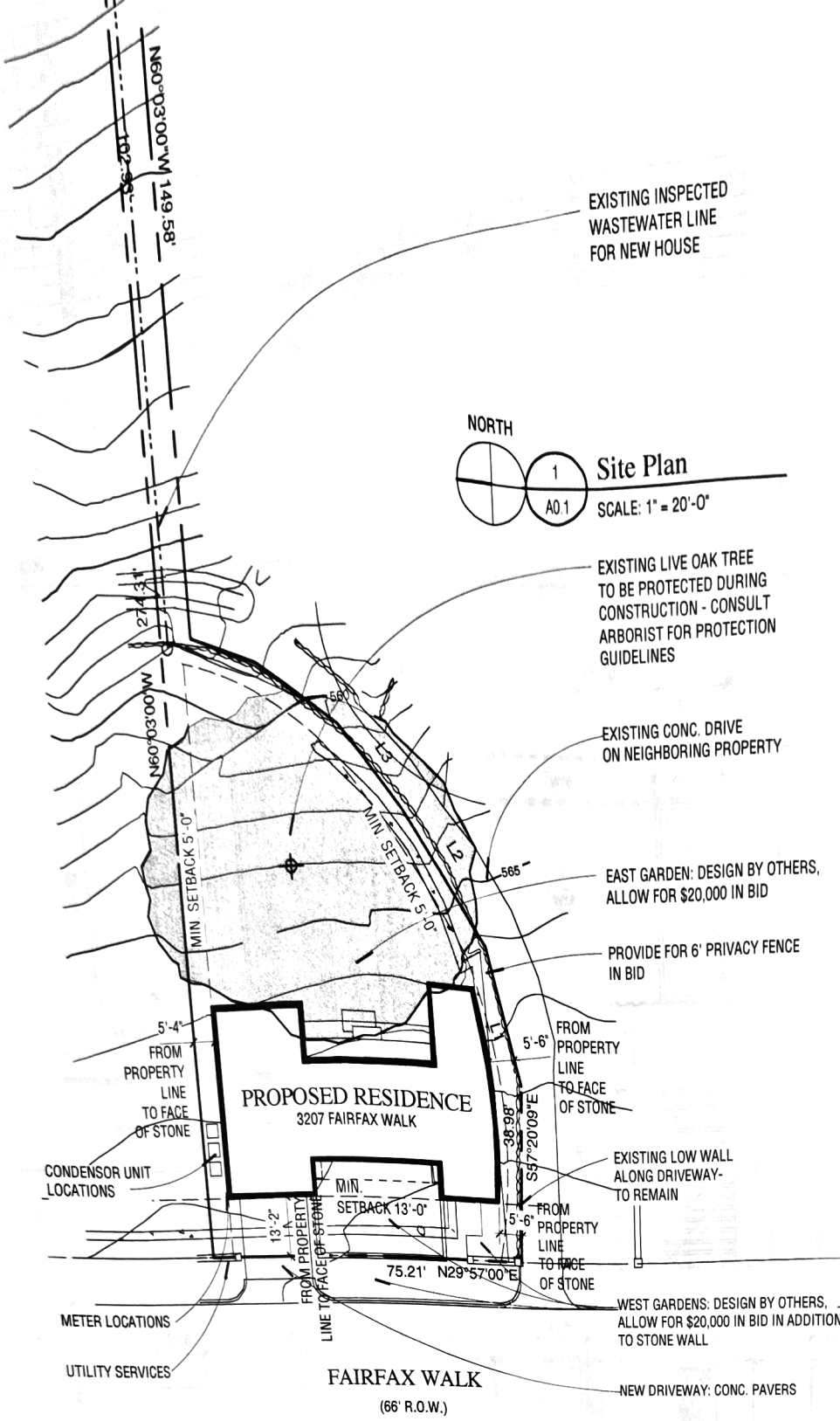


STRUCTURAL ENGINEER: Jerry Garcia
 STRUCTURES
 1018 W 11th St
 AUSTIN, TX. 78703
 (PH) 499-0919

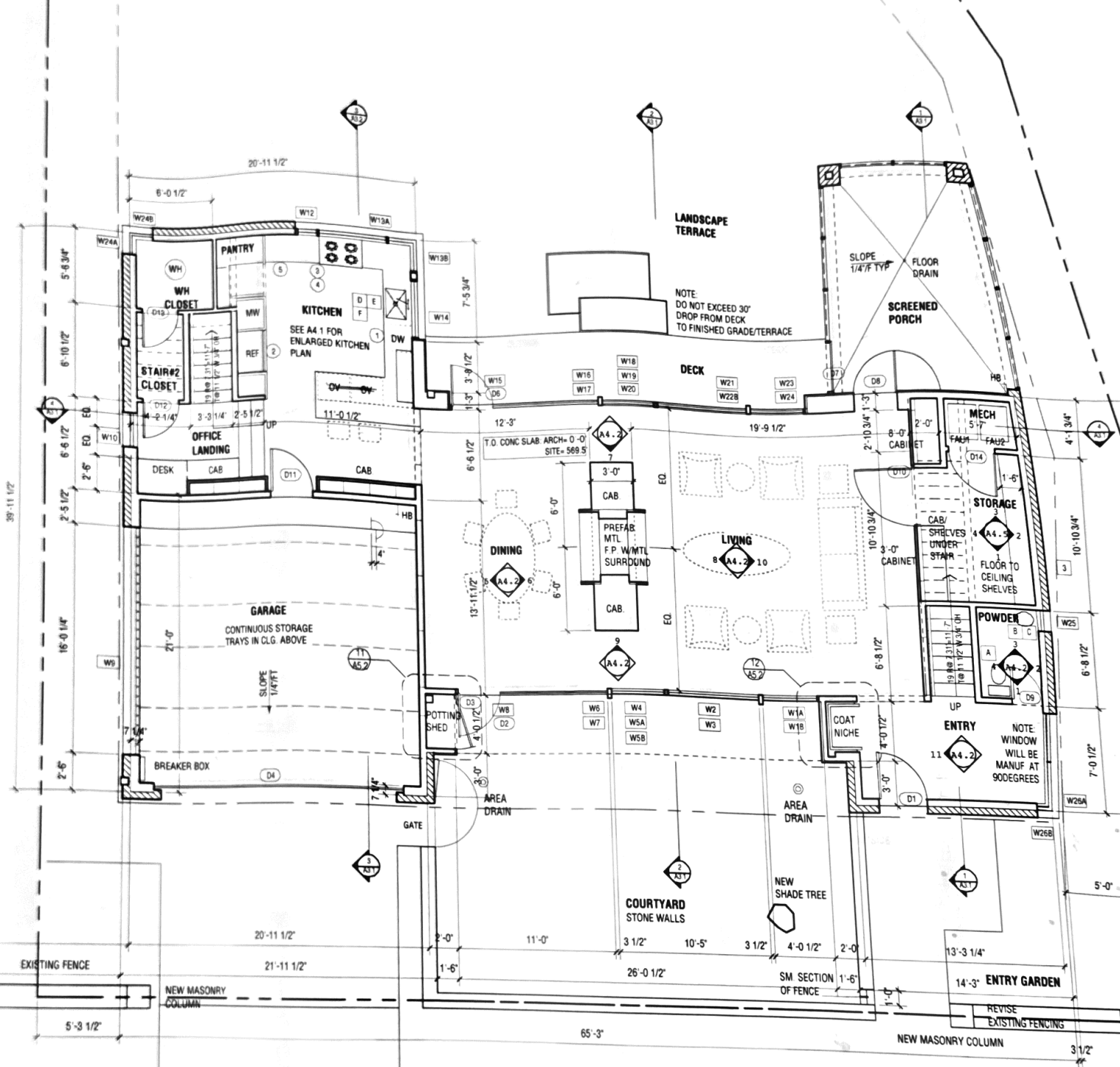


Site Plan
 NORTH
 1
 A0.1
 SCALE: 1" = 20'-0"

Area/s.f. Summary	
1st Floor-conditioned	1,472.67 sf
1st Floor garage	472.02 sf
1st Floor Porches & Decks (No Front Patio, Wall, Walk)	388.20 sf
Total 1st Floor	2,332.89 sf
2nd floor-conditioned	1,624.95 sf
2nd floor-Balconies	539.00 sf
Total 2nd Floor	2,163.95 sf
Total conditioned area	3,097.62 sf
Total Porches, decks, balconies	927.20 sf
Total constructed area	4,496.84 sf
IMPERVIOUS COVER	
Lot area	8,919.40 sf
Allowable Imp. Cover(45%)	4,013.73 sf
Driveway	277.60 sf
House	2,158.30 sf
Entry/patio	708.45 sf
Tree Deck & Steps	159.20 sf
Existing curved wall	148.69 sf
Total Imp Cover (38.70%)	3,452.24 sf

BOX DESIGN [TEL] 512.659.8083
 PROJECT: 3207 FAIRFAX WALK

A0.1
 JUNE 12, 2002
 CONSTRUCTION SET



39'-11 1/2"

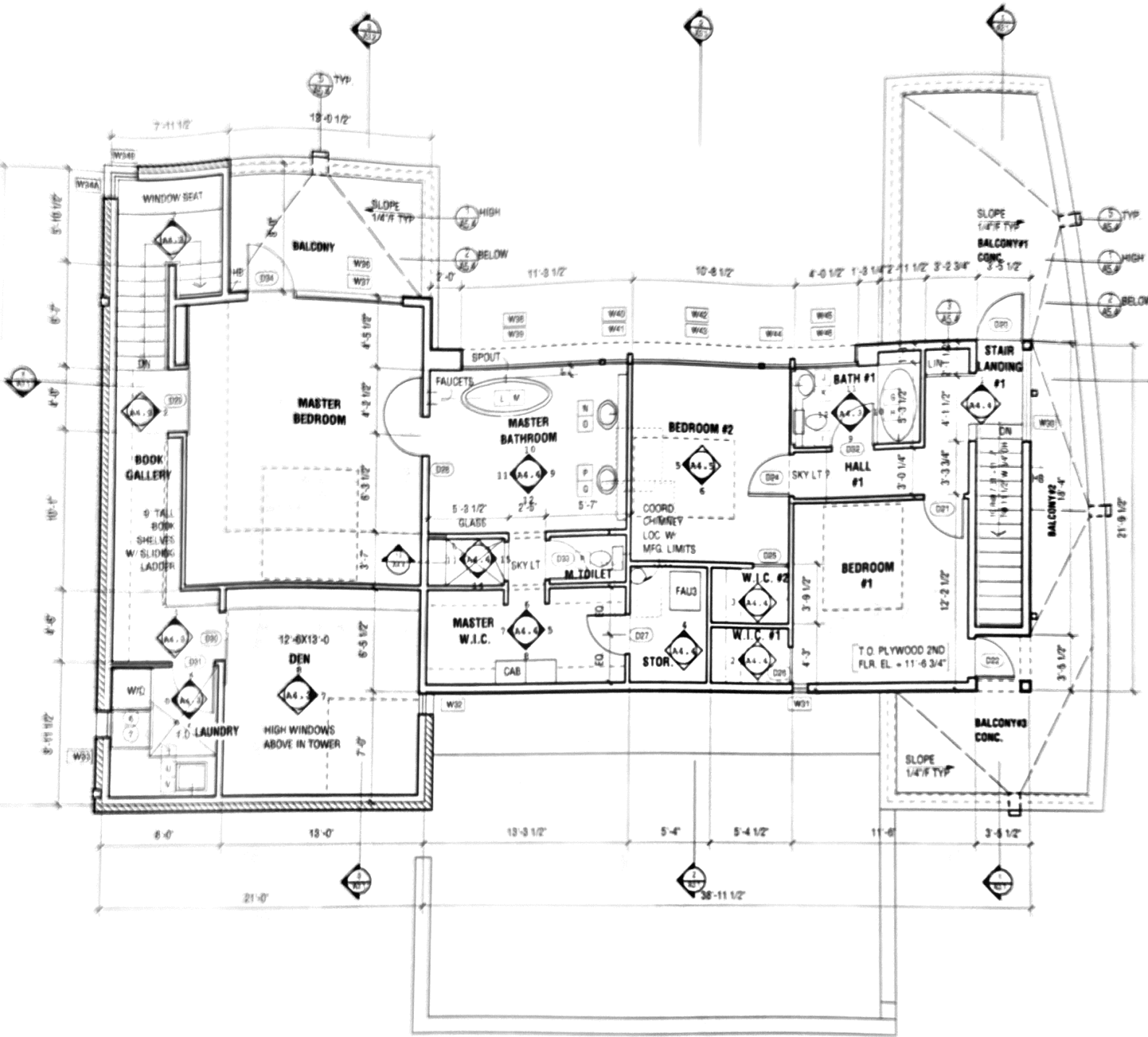
NOTE
DO NOT EXCEED 30"
DROP FROM DECK
TO FINISHED GRADE/TERRACE

NOTE
WINDOW
WILL BE
MANUF AT
90DEGREES



1 First Floor Plan
A1.1 SCALE: 1/4" = 1'-0"

NOTE



NORTH  1 Second Floor Plan
 A1.2 SCALE 1/4" = 1'-0"

NOTE
 * DIMENSIONS ARE TO FACE OF STUDS U.N.O.
 * EXTERIOR WALLS ARE 2x6 STUD WALLS U.N.O.
 * INTERIOR WALLS ARE 2x4 STUD WALLS U.N.O.